

GFI Archiver™ 2015

File Archiving Assistant



All your important company data in one
secure, compliant and searchable archive



Find out more and start your FREE trial:

gfi.com/archiver

Microsoft Partner
Gold Application Development
Silver Midmarket Solution Provider

GFI Archiver™
Archiving for productivity, management and compliance

Reports, presentations, internal and external communications, and all other files that your company creates daily are essential sources of business intelligence. Keeping track of it all can be time-consuming, labor-intensive and expensive. For most companies, it is also a legal necessity.

To simplify the process, we have extended the file-archiving features of our award-winning archiving solution: GFI Archiver.

GFI Archiver enables companies to manage and access important company files and email easily, and store them securely in an instantly accessible, compliant archive.

How it works

- File Archive Assistant (FAA) is installed on a user's machine.
- The user identifies which files and folders should be synchronized with GFI Archiver. Files and folders are immediately pushed to GFI Archiver.
- In the case of shared files, when files are updated locally by other users, the updated version is automatically updated to the archive and also pushed to the shared synchronized folder for everyone to see.
- When files are viewed via the GFI Archiver interface, the user can choose to see them in their current view, which mirrors all files on your disk. Another option is the history view, which shows the complete file history, including files that have been deleted.

Enable collaboration for your end users

Colleagues contributing to the same project can work on the same files using the FAA. Teams are allocated a shared location on GFI Archiver where they can store all project-related files.

Teams can modify files and feel confident that their copy will be saved in the archive. Any modification is saved, and users can easily resolve file conflicts if they arise, using the conflict resolution dialog.

Search

Quickly search and retrieve the files you need: GFI Archiver keeps a full text-based index, and it can index all the major document formats generated by Microsoft® Office, PDFs, compressed files (zip, rar).

See the full list at: <http://www.gfi.com/support/products/gfi-mailarchiver/KBID003126>

With the FAA, you empower your users by giving them peace of mind that their data is safe. You also provide them with a tool that quickly locates files simply by typing keywords.

With file archiving, GFI Archiver addresses all your company's archiving needs.

Benefits at a glance

Connecting global employees and simplifying how they work together

Finding and retrieving files quickly and easily using powerful search capabilities

Simplifying legal compliance with comprehensive audit trail and retention policy features

Instant access to business-critical files anytime, anywhere – from any device.

For a full list of benefits visit:
www.gfi.com/archiver

Software requirements

Windows® Vista®, 7, 8 and 8.1
Windows Server® 2003, 2008, 2012

Other required components:

HTTP port 80 (or HTTPS default port 443 for secure connections) - used to connect with GFI Archiver.

Microsoft .NET Framework 4/4.5 Client Profile

Hardware requirements

Processor:

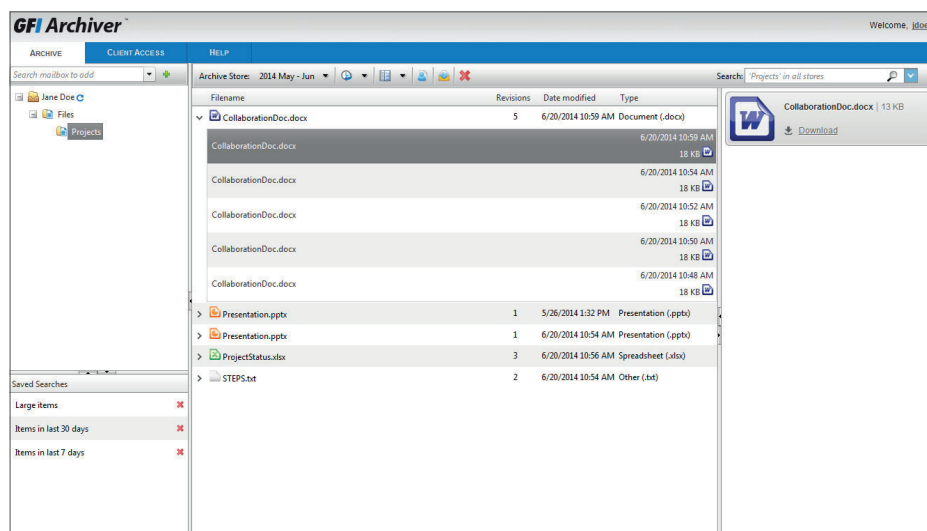
1GHz processor or more

Memory:

Minimum: 512MB RAM
Recommended: 2GB RAM

Physical storage:

20MB physical disk space required for GFI Archiver (FAA) installation.
Extra storage space is required for the additional files to be stored and shared.



For a full list of GFI offices/contact details worldwide, please visit: www.gfi.com/contact-us

© 2014 GFI Software – Windows XP/7/2008/Vista/2003/XP/2000/NT are trademarks of Microsoft Corporation.

GFI Archiver is a registered trademark, and GFI and the GFI logo are trademarks of GFI Software in Germany, USA, the United Kingdom and other countries.

All product and company names herein may be trademarks of their respective owners.

Start your free trial at gfi.com/archiver